

# 2019 Etchells Atlantic Coast Championship, Lippincott Memorial & 2nd District Star Class Championship

CBYRA Sanction #365, 366



**October 18-20, 2019**

Organizing Authority: Annapolis Yacht Club  
Annapolis, Maryland, USA

<http://www.annapolisyc.com/racing/regattas>

## SAILING INSTRUCTIONS

*The notation '[DP]' in a rule in the sailing instructions (SIs) or notice of race (NoR) means that the penalty for a breach of that rule may, at the discretion of the protest committee, be less than disqualification. The notation '[NP]' in a rule of the SIs or NoR means that a boat may not protest another boat for breaking that rule. This changes RRS 60.1(a).*

### 1 RULES

- 1.1 The regatta will be governed by the rules as defined in The Racing Rules of Sailing (RRS).
- 1.2 The regatta is an Etchells Class C sanctioned event under Appendix A of the International Etchells Association (IECA) Rules.
- 1.3 The regatta is a Star Class Blue (District) Championship under International Star Class Yacht Racing Association (ISCYRA) class rule (STCR) 23.5.3 sailed under Format C (STCR 34.3.7).

### 2 COMMUNICATIONS WITH COMPETITORS

- 2.1 Notices to competitors will be posted on the official notice boards which are electronic and located at:  
Etchells:  
<https://yachtscoring.com/emenue.cfm?eID=6233>  
Stars:  
<https://yachtscoring.com/emenue.cfm?eID=7367>
- 2.2 The race office is located at the western end of the 3rd floor of the AYC Sailing Center, and can be reached by telephone at 410-858-4964 or by email at [raceoffice@annapolisyc.org](mailto:raceoffice@annapolisyc.org). Forms can be found at the race office or online at <https://annapolisyc.com/racing/raceoffice>.
- 2.3 On the water, the race committee intends to monitor and communicate with competitors via VHF radio on channel 72.
- 2.4 [DP] For the Etchells, per IECA App A, 11K:  
(a) the use of mobile/cell phones or any device capable of sending and/or receiving external electronic communication and/or connecting to the internet is prohibited after the first warning signal on each race day until the boat has completed its day's racing, except in an emergency threatening the safety of any member of the crew or the flotation of the boat.

(b) watches that include a GPS function (and similar devices) are not allowed on the boat during racing.

### 3 CHANGES TO SAILING INSTRUCTIONS

- 3.1 Any change to the SIs will be posted no later than 2 hours before the first scheduled warning signal on the day it will take effect, except that any change to the schedule of races will be posted by 2000 on the day before it will take effect.

### 4 SIGNALS MADE ASHORE

- 4.1 Signals made ashore will be displayed from the flagpole on the 2nd deck of the AYC clubhouse.
- 4.2 When flag AP is displayed ashore, '1 minute' is replaced with 'not less than 60 minutes' in the race signal AP.

### 5 SCHEDULE OF RACES

- 5.1 The event schedule will be:

Day	Time	Scheduled Action
Oct 18	1000-1800	On-site Registration and Crew Weigh-ins
	1300	Etchells on the Water Clinic
	1800	Welcome Reception - Etchells Competitors & Skippers Meeting
	0800-0930	On-site Registration & crew weigh-ins
Oct 19	1030	1 <sup>st</sup> Warning - Etchells
	1040	1 <sup>st</sup> Warning - Stars
	1830	Etchells/Star Competitors Party with complimentary beer and light fare
	1030	1 <sup>st</sup> warning - Etchells
Oct 20	1040	1 <sup>st</sup> warning - Stars
	1430	No further warning signals
	After racing	Prize giving

5.2 A total of 6 races are scheduled. Up to 3 races may be sailed per day. This changes Etchells NOR 7.2.

## 6 CLASS FLAGS

6.1 The class flags are:

Class	Class flag
Etchells	Flag E
Star	ISCYRA Flag

## 7 RACING AREA

7.1 The racing area will be in the Chesapeake Bay off the mouth of the Severn River as shown in SI Attachment 1.

7.2 No later than 120 minutes prior to the first scheduled warning signal, the race committee will post the approximate intended location of the starting area on the notice board.

7.3 Approximately 60 minutes prior to the first scheduled warning signal, the race committee will announce the approximate location of the starting area on VHF radio.

7.4 Approximately 30 minutes prior to the first scheduled warning signal, the race committee will announce location of the race committee signal vessel.

## 8 THE COURSES

8.1 The courses are shown in SI Attachment 2.

8.2 No later than the warning signal, the race committee signal vessel will display the course to be sailed, the approximate distance between the leeward and windward marks, and the approximate compass bearing of the first leg of the course.

8.3 If the race committee signal vessel displays flag C before the warning signal, accompanied by a series of repetitive sounds, the first mark of the course will be a change mark (see SI 0).

## 9 MARKS

9.1 Starting marks, finishing marks, and mark 1a will be lime green cylinders. All other marks of the course will be orange cylinders.

9.2 New marks used in accordance with SI 0 will be orange cylinders with a dark colored band.

9.3 A race committee starting or finishing vessel may set a stand-off buoy. When present, this stand-off buoy, the line attaching it to the race committee vessel, and the race committee vessel are all part of the starting or finishing mark.

## 10 THE START

10.1 The starting line will be between the staff or halyard with an orange flag displayed on the race committee signal vessel and the course side of the starting mark.

10.2 [DP] Boats whose warning signal has not been made shall avoid the starting area during the starting sequence for other races.

10.3 A boat that does not start within 10 minutes after her starting signal will be scored Did Not Start without a hearing. This changes RRS A4 and A5.

## 11 RECALLS

The race committee will announce on VHF radio boats identified as OCS, UFD, or BFD. A boat may not base a request for redress on the failure to hear or receive the announcements, the timeliness of announcement or the order in which boats are announced. This changes RRS 62.1(a).

## 12 CHANGE OF THE NEXT LEG OF THE COURSE

12.1 To change the next leg of the course, the race committee will lay a new mark (or move the finishing line) and remove the original mark as soon as practicable. When in a subsequent change, a new mark is replaced, it will be replaced by an original mark.

## 13 THE FINISH

The finishing line will be between a staff or halyard displaying a blue flag on the race committee finishing vessel and the course side of the finishing mark. For downwind finishes, the finish line will be on the opposite side of the race committee vessel as the starting line.

## 14 PENALTY SYSTEM

14.1 For the Stars, per STCR 35.5, RRS 44.1 is changed such the penalty shall be a One-Turn Penalty.

14.2 For the Etchells, per IECR App A, 11.E: RRS 44.1 is changed such that the penalty shall be a One Turn Penalty except that for infringements occurring within the Zone (as defined in the RRS) the penalty shall be a Two Turns Penalty

14.3 RRS/US Appendix V2, Penalty Taken After a Race, applies.

## 15 TIME LIMITS

15.1 If no boat has passed the first mark within 30 minutes after the starting signal, the race will be abandoned.

15.2 In each class, the time limit is 90 minutes.

15.3 Boats failing to finish within 15 minutes after the first boat in her class sails the course and finishes, and not subsequently retiring, penalized or given redress, will be scored Time Limit Expired (TLE) without a hearing. This changes RRS 35, A4, A5 and A11.

## 16 PROTESTS, REQUESTS FOR REDRESS, SCORING INQUIRIES

16.1 Protest forms, scoring inquiry forms, and penalty acceptance forms shall be delivered to the race office (see SI 2).

- 16.2 Protests, requests for redress or reopening shall to the race office by the protest time limit.
- 16.3 When the race committee receives a scoring inquiry form, it will review its records and respond as soon as practicable.
- 16.4 The protest time limit is 60 minutes after the race committee signal vessel docks. The race committee will post the protest time limit.
- 16.5 The race committee will post a list of race committee scoring actions no later than the protest time limit.
- 16.6 Notices of protests by the race committee or protest committee will be posted to inform boats under RRS 61.1(b).
- 16.7 As soon as practicable after the protest time limit, the protest committee will post a notice to inform competitors of the schedule and location of hearings in which they are parties or named as witnesses.

## 17 SCORING

- 17.1 RRS Appendix A4, Low Point System, will apply.
- 17.2 For the Stars, three races are required to be completed to constitute a series.
- 17.3 For the Etchells, one race is required to be completed to constitute a series.
- 17.4 A boat's series score will be the total of her race. When fewer than 4 races have been completed, a boat's series score will be the total of her race scores. This changes Etchells NOR 12.3 and 12.4.
- 17.5 Boats to be scored TLE will be scored points equal to the number of boats finishing within the finishing window plus two points by the race committee without a hearing but no worse than the number of entries. This changes RRS A4.2 and A5.

## 18 SAFETY REGULATIONS

- 18.1 [DP] A boat that retires from a race, or leaves the racing area between races, shall notify the race office (see SI 2) at the first reasonable opportunity.
- 18.2 [NP] [DP] A boat shall not exercise right of way, cross in proximity to, or interfere with reasonable

transit of the race area by commercial ships, tugs, or barges. Boats must take evasive action well in advance of a potentially dangerous situation. The US Coast Guard, ship captains, and bay pilots have been encouraged to report any incident they observe.

- 18.3 A boat without way may use any means of propulsion to avoid commercial traffic that is under way provided: (a) the boat does not gain an advantage; (b) use of the propulsion is the boat's only means of avoiding the commercial traffic; and (c) the boat submits a report to the race office (in writing or by e-mail to [raceoffice@annapolisyc.org](mailto:raceoffice@annapolisyc.org)) by the protest filing deadline describing the incident and the boat's actions.
- 18.4 The race committee or protest committee may protest a boat for SI 0 based on information received from any source. A written statement from the US Coast Guard, a ship captain, or a bay pilot will be accepted as evidence without the author present. The protest time limit does not apply. This changes RRS 60.2, 60.3, 61.3, and 63.6.

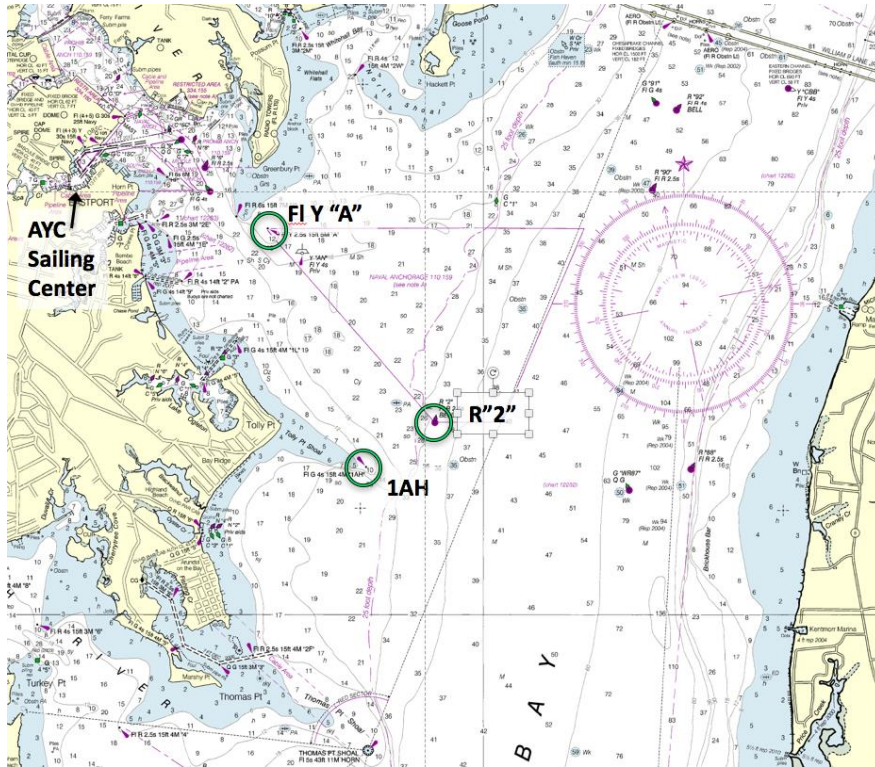
## 19 PRIZES

- 19.1 Prizes will be given for top 5 Etchells in the regatta and the top Etchells in the Corinthian Division.
- 19.2 Prizes will be given to the top 3 Star boats competing in the Lippincott Memorial Regatta.
- 19.3 Prizes will also be given to the top 3 Star boats competing in the 2<sup>nd</sup> District Championship.
- 19.4 Additional prizes may be awarded at the discretion of the OA.
- 19.5 Awards will be presented after racing at the AYC Sailing Center.

## 20 DISCLAIMER OF LIABILITY

Competitors participate in the regatta entirely at their own risk. See RRS 4, Decision to Race. The organizing authority will not accept any liability for material damage or personal injury or death sustained in conjunction with or prior to, during, or after the regatta.

# SI ATTACHMENT 1 - RACE AREA



## SI ATTACHMENT 2 - COURSES

In the below table, the course designation is followed by the mark rounding order for that course. All marks except 2S are to be rounded to port. If the race committee displays "NO GATE" near the course designation, then mark 2S will not be set. The marks are described in SI 0. The starting line is described in SI 0. The finishing line is described in SI 0.

<div style="font-size: 2em; font-weight: bold; margin-bottom: 10px;">LA</div> <p>LA2: Start-1-1a-2s/2p-1-1a-Finish LA3: Start-1-1a-2s/2p-1-1a-2s/2p-1-1a-Finish</p>	<div style="font-size: 2em; font-weight: bold; margin-bottom: 10px;">L</div> <p>L2: Start-1-2s/2p-1-Finish L3: Start-1-2s/2p-1-2s/2p-1-Finish</p>	<div style="font-size: 2em; font-weight: bold; margin-bottom: 10px;">TL</div> <p>TL2: Start-1-2-3-1-Finish TL3: Start-1-2-3-1-3-1-Finish</p>
<div style="font-size: 2em; font-weight: bold; margin-bottom: 10px;">WA</div> <p>WA2: Start-1-1a-2s/2p-Finish WA3: Start-1-1a-2s/2p-1-1a-2s/2p-Finish WA4: Start-1-1a-2s/2p-1-1a-2s/2p-1-1a-2s/2p-Finish</p>	<div style="font-size: 2em; font-weight: bold; margin-bottom: 10px;">W</div> <p>W2: Start-1-2s/2p-Finish W3: Start-1-2s/2p-1-2s/2p-Finish W4: Start-1-2s/2p-1-2s/2p-1-2s/2p-Finish</p>	<div style="font-size: 2em; font-weight: bold; margin-bottom: 10px;">TW</div> <p>TW2: Start-1-2-3-Finish TW3: Start-1-2-3-1-3-Finish</p>